

## COMPLETE RANGE OF PRODUCTS BONEGA®



BONEGA® development team brings out every year plenty of new products full of world-patents. All devices are protected as industrial design. As one of few companies in Europe, BONEGA® provides 3-year warranty. All products in P-E-P series are easily recognizable by user's inscription under a transparent window.



### *6 kA a 10 kA MCB up to 63A*

- extraordinary short-circuit resistance 6 and 10 kA within whole range
- failure signalization by lever position
- extraordinary switch-off speed (under 5 ms)
- the largest amount of innovations
- winner of GOLD AMPER 2005 (international exhibition)
- two world patents



### *15 kA MCB for industry*

- world-unique product
- such parameters were possible only in a 1,5 module MCB
- lower costs and space requirements
- instantaneous switching of contacts (longer life-time)
- failure signalization by lever position
- nominated for GOLD AMPER 2007
- two world patents



### *Combined device DPN up to 32A*

- MCB and switch in one module
- first in the world with 6 kA short-circuit resistance within whole range
- nominated for GOLD AMPER 2006
- great future in utility
- two world patents



### *Combined device RCBO up to 32A*

- MCB and RCD in one module
- extraordinary 10 kA short-circuit resistance within whole range
- two world patents



### *Switches up to 63A*

- locking bar (a conductor will never be connected incorrectly)
- indication of the contact conditions
- convenient built-up system
- one world patent



### *Switches up to 125A*

- first in the world with instantaneous switching of such large contacts
- easy up-link of accessories
- one world patent



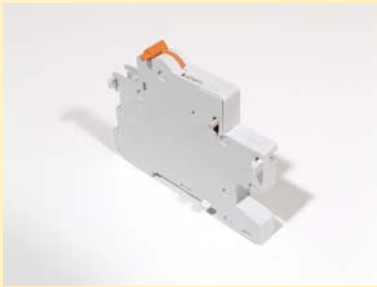
### *RCD up to 63A*

- first RCD up to 63A with failure signalization by lever position
- easy up-link of accessories
- very reliable mechanism
- one world patent



## *RCD up to 100 A*

- 10 kA short-circuit resistance
- failure signalization by lever position
- easy up-link of accessories
- one world patent



## *Accessories for MCBs, DPNs, Switches and RCDs*

- auxiliary contacts
- low-volt switch-off releases
- voltage switch-off releases



## *Bell Transformers*

- 230V; range 8,12,24V AC, 8VA
- class II – double insulation
- resistant to short-circuit



## *Module Bells*

- 230, 24, 12 V AC
- classic bell-sound

## **EKONOMICALLY BENEFICIAL SERIES EV**

Module devices in EV series are designed for home usage and for customers with insistence on low price.



## *MCB up to 40 A with 6 kA short-circuit resistance*

- compete to cheap imports both by price and technical parameters

## FROM PRODUCTION COOPERATION

- Module Contactors up to 63A
- Industrial Contactors up to 800A
- Manual Motor Starters up to 100A
- MCCB up to 800A
- Plastic Cable Glands
- Interconnecting Strips
- DIN Strips
- Plastic Enclosures
- Metal Enclosures
- Meter Boxes

